

Manukau Symphony Orchestra



MANUKAU SYMPHONY
orchestra
...a very special spirit'

MSO
20
25

2025 Season

Due Drop Events Centre Manukau

THE RESOLUTE

Saturday 15 March 7.30pm

MSO FAMILY CONCERT

Sunday 15 June 5.00pm

PASTORALE

Sunday 24 August 5.00pm

FROM THE NEW WORLD

Saturday 15 November 7.30pm

NICHOLAS TARLING ARIA COMPETITION **FREE CONCERT**

FINAL ROUND PERFORMANCE CONCERT

Tuesday 11 February 7.00pm

THE EMPEROR & THE NIGHTINGALE **FREE FOR SCHOOLS**

MSO SCHOOLS CONCERTS

Mon 31 March Tues 1 April

SYMPHONIC JOURNEY – WORKSHOP **FREE**

LA FORZA DEL DESTINO

Sunday 19 October 5.00pm

Auckland Town Hall Auckland CBD

OPERA GALA WITH AUCKLAND OPERA STUDIO

Sunday 20 July 5.00pm

MSO 2025

WELCOME, NAU MAI, HAERE MAI!

The Manukau Symphony Orchestra is thrilled to present a stellar season of musical wonder for 2025! From engaging family concerts to captivating mainstage performances, we invite audiences of all ages to join us in celebrating the joy of music.



Our season features cherished classics and exciting new favourites, highlighted by a dynamic lineup of soloists and compositions, including fresh works from New Zealand's own composers.

Every concert is made possible by our dedicated team of staff and volunteers, whose passion enables us to nurture our musicians' talents and enrich our vibrant community. Despite the ongoing funding challenges in the arts, we remain committed to finding creative ways to bring the MSO's vision to life. With a strong administrative foundation and an exceptional ensemble, your Manukau Symphony Orchestra proudly upholds its values of inclusivity and equality, embodying our motto, "...a very special spirit."

Ngā mihi nui, see you at our concerts!

SHELLEY ROBERTSON
GENERAL MANAGER

I am incredibly proud to support the Manukau Symphony Orchestra as a patron for the 2025 season. It brings me immense joy to see the orchestra collaborating with different venues and organisations, creating a wealth of diverse musical experiences for South Auckland. The MSO's dedication to nurturing young talent is inspiring, offering the youth of our community invaluable opportunities to engage with classical music.



As we embark on this new season, I wholeheartedly encourage you to join me in supporting this outstanding organisation through generous donations and by attending concerts. Together, we can ensure that the Manukau Symphony Orchestra continues to be a cultural treasure in our community, enriching lives through the transformative power of music and fostering a lasting appreciation for the arts among future generations.

SIR NOEL ROBINSON KNZM
MSO PATRON

THE RESOLUTE

SATURDAY 15 MARCH 7.30PM | DUE DROP EVENTS CENTRE



UWE GRODD

ROSSINI

BARBER OF SEVILLE
OVERTURE

TCHAIKOVSKY

PIANO CONCERTO NO. 1

ADRIEN DE CROY (NZ) SYMPHONY NO. 1

'THE RESOLUTE'
WORLD PREMIERE

UWE GRODD
SHAN LIU

CONDUCTOR
PIANO



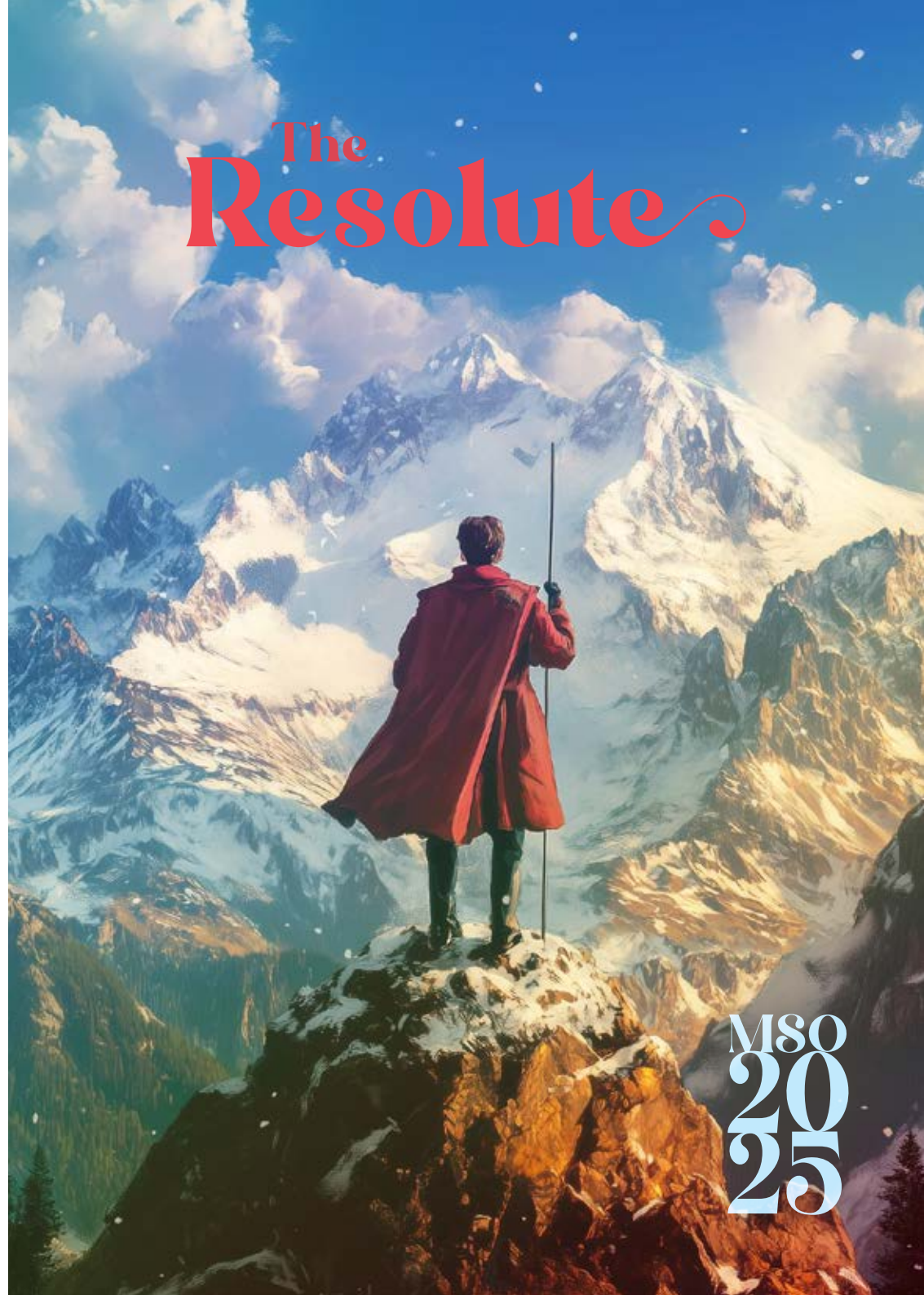
SHAN LIU

After last year's standing ovation for Rachmaninov 2, we are thrilled to welcome back the prodigious 14-year-old pianist Shan Liu. Performing Tchaikovsky's iconic Piano Concerto No. 1, with its unmistakable and electrifying opening, Shan's return promises a thrilling display of passion and virtuosity.

Composed between 2021 and 2023 - a time marked by unprecedented global challenges - Adrien de Croy's Symphony No. 1, 'The Resolute' delves into the human condition under the weight of turmoil. This symphony takes listeners on a journey of endurance, resilience, and the indomitable human spirit. 'The Resolute' is not only a reflection of external struggles but also an intimate exploration of the inner battle for hope amid chaos and beauty, conveying a shared experience of a world in flux and the possibility of renewal.

The evening opens with Rossini's playful Barber of Seville Overture, setting the stage for an unforgettable night of music.

Join us for a FREE pre-show talk with composer Adrien de Croy and conductor Uwe Grodd, held in the theatre at 6:45 pm, to explore the inspiration and themes behind The Resolute.



MSO
20
25

MSO FAMILY CONCERT

SUNDAY 15 JUNE 5.00PM | DUE DROP EVENTS CENTRE



BRENT STEWART

R. STRAUSS
HOLST
PROKOFIEV
MENDELSSOHN
J. WILLIAMS
GLUCK

PUCCINI, VERDI
GRAY

ALSO SPRACH ZARATHUSTRA
JUPITER *FROM THE PLANETS*
PETER AND THE WOLF
VIOLIN CONCERTO *ALLEGRO*
FLYING THEME *FROM E.T.*
DANCE OF THE BLESSED
SPIRITS
ARIA SELECTION
THUNDERBIRDS ARE GO!

BRENT STEWART
SUZY CATO
NORA QU
HAYDEN CHIU
NICHOLAS TARLING ARIA COMPETITION PRIZE
WINNERS

CONDUCTOR
NARRATOR
FLUTE
VIOLIN



SUZY CATO

Join us for an exhilarating journey through space and sound at the MSO Family Concert! This cosmic-themed program will transport audiences to the stars, offering a captivating experience for all generations.



NORA QU

The concert opens with the awe-inspiring grandeur of Also Sprach Zarathustra, famously featured in 2001: A Space Odyssey. Holst's majestic Jupiter then takes you to the very heart of the solar system, while Williams' iconic Flying Theme from E.T. invites you on a soaring interstellar adventure. Adding a touch of space-age nostalgia, the thrilling Thunderbirds Are Go! theme is sure to ignite imaginations.



HAYDEN CHIU

Prokofiev's beloved Peter and the Wolf, a timeless musical tale that introduces children to the instruments of the orchestra, promises fun for all ages. We welcome the much-loved and magical Suzy Cato as narrator.

We are excited to welcome two young soloists, 12-year-old flautist Nora and 14-year-old violinist Hayden, to the stage for their debut performances alongside the accomplished winners of the Nicholas Tarling Aria Competition.

Family Special: Bring the whole whānau and enjoy our special discount - two adults and two children, for just \$65. Programme suitable for children 5 years and above.

Family Concert



MSO
20
25

PASTORALE

SUNDAY 24 AUGUST 5.00PM | DUE DROP EVENTS CENTRE



UWE GRODD

FISHER (NZ)
BEETHOVEN
BEETHOVEN

KINTSUGI FOR ORCHESTRA
TRIPLE CONCERTO IN C MAJOR
SYMPHONY NO.6 'PASTORALE'

UWE GRODD
NZTRIO

CONDUCTOR
AMALIA HALL VIOLIN
ASHLEY BROWN CELLO
SOMI KIM PIANO



NZTRIO

The program opens with Salina Fisher's Kintsugi for Orchestra, a stunning work inspired by the Japanese art of mending with gold, symbolising resilience through vulnerability and the beauty of imperfection. Originally written for the NZTrio, Kintsugi was commissioned for orchestra and premiered by the MSO in 2022, and is now celebrated around the globe.

Next, the renowned NZTrio joins us on stage to perform Beethoven's Triple Concerto, a masterpiece of collaboration between piano, violin, cello, and orchestra, blending Viennese elegance with dynamic interplay.

The concert culminates in Beethoven's beloved Pastoral Symphony No. 6, a timeless tribute to the countryside, capturing the tranquility, joy, and calm of nature alongside its raw power. A nature lover himself, Beethoven spent many hours walking in the country, and his symphony reflects the shepherd's pipe, birdsong, flowing streams, and even a dramatic thunderstorm with vivid beauty.

Pastorale



MSO
20
25

FROM THE NEW WORLD

SATURDAY 15 NOVEMBER 7.30PM | DUE DROP EVENTS CENTRE



UWE GRODD

JENNY MCLEOD
MOZART

'AT THE BAY'
PIANO CONCERTO
NO.20 K 466
SYMPHONY NO. 9
'FROM THE NEW WORLD'

DVOŘÁK

UWE GRODD CONDUCTOR
MICHAEL HOUSTOUN PIANO



MICHAEL
HOUSTOUN

Our MSO season reaches its powerful conclusion with Dvořák's Symphony No. 9, From the 'New World' - a masterpiece that fuses European classical heritage with the vibrant sounds of the Americas, echoing themes of hope, discovery, and cultural fusion. Dvořák explores new frontiers throughout, creating a sense of optimism and the promise of a better life.

We are thrilled to welcome back acclaimed pianist Michael Houstoun, performing Mozart's powerful Piano Concerto No. 20 - a work full of elegance and Mozartian playfulness. This concert marks the first collaboration between the MSO and Michael on a Mozart concerto.

The program opens with 'At The Bay' from Jenny McLeod's Three Celebrations for Orchestra. This vividly evocative piece, inspired by the landscapes of Katherine Mansfield's New Zealand, is filled with lyrical beauty and local color.

From the New World

MSO
20
25



AUCKLAND OPERA STUDIO
IN ASSOCIATION WITH
MANUKAU SYMPHONY ORCHESTRA

SAVE THE DATE!

OPERA GALA 2025

SUNDAY 20 JULY 5.00PM | AUCKLAND TOWN HALL

TICKETS AVAILABLE FROM TICKETMASTER.CO.NZ



UWE GRODD

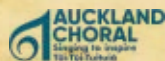
BELOVED ARIAS AND CHORUSES
PUCCINI MANON LESCAUT ACT 3 & ACT 4
SOLOISTS AND FINAL REPERTOIRE ANNOUNCED 2025

UWE GRODD CONDUCTOR
JOHN DAVIES STAGE DIRECTOR
AUCKLAND CHORAL
MANUKAU SYMPHONY ORCHESTRA

This event follows the highly regarded VERDI MEETS
PUCCINI production in 2024.

“Uwe Grodd asserted his stellar status with his baton, expertly navigating his musicians through volatile textures and tempi that so mysteriously, even out of an opera house, stir both heart and soul.”

- William Dart, NZ Herald



NICHOLAS TARLING ARIA COMPETITION 2025

The Manukau Symphony Orchestra is delighted to announce the Nicholas Tarling Aria Competition 2025. The South Auckland area is brimming with talented singers and the MSO is proud to host an aria competition to help develop and support their future careers. In the spirit of the MSO, this free competition is open to singers of all ages and backgrounds.

PRIZES

First Prize Winner	\$5,000 and performance with the MSO
Runner-up Prize	\$3,000 and performance with the MSO
Most Promising Singer Prize	\$1,000
18 Years and Under Prize	\$1,000
Sally Stone Award	\$1,000
36 Years and Over Prize	Tarling Aria Trophy

COMPETITION TIMELINE

DIGITAL ENTRIES CLOSE | SUNDAY 24 NOVEMBER 2024

Applicants upload a video of their singing to YouTube and complete an application form containing a link to the performance by 24 November 2024.

Apply through the following link www.tarlingaria.org.nz

FINAL ROUND FREE

TUESDAY 11 FEBRUARY 2025 7.00PM | DUE DROP EVENTS CENTRE

Finalists will be invited to perform two pieces with piano accompaniment on Tuesday 11 February 2025 at 7.30pm, to adjudicators, friends, family, and the public. The prize winners will be announced at the end of the evening.

WINNER AND RUNNER-UP PERFORMANCE MSO FAMILY CONCERT

SUNDAY 15 JUNE 2025 5.00PM | DUE DROP EVENTS CENTRE

The First Prize Winner and Runner-up perform with the Manukau Symphony Orchestra at the MSO FAMILY CONCERT on Sunday 15 June 2025, conducted by Brent Stewart.

For more information and how to apply, visit www.tarlingaria.org.nz



THE EMPEROR & THE NIGHTINGALE

FREE FOR SCHOOLS

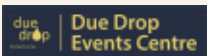
MSO SCHOOLS CONCERTS | DUE DROP EVENTS CENTRE
MONDAY 31 MARCH 11AM & 1PM TUESDAY 1 APRIL 11AM & 1PM



SUZY CATO

UWE GRODD CONDUCTOR
SUZY CATO NARRATOR
JACK BOURKE MC
MANUKAU SYMPHONY ORCHESTRA

Live Symphonic music is a thrilling experience for all ages. For children especially, studies have shown listening and engaging with orchestral music to have a positive response with children feeling calm, relaxed, and engaged regardless of what is being played. Many children also feel inspired to learn an instrument after attending such events.



These concerts will feature well-known pieces for children such as Peter and the Wolf and the William Tell Overture, alongside stories set to music by Claire Cowan and Jenny McLeod with Narrator Suzy Cato, and MC Jack Bourke.

Our 2024 concerts were fully booked! Is your school going? Contact Morgan Darkwa morgan@wakapacific.org.nz at the Due Drop Events Centre to find out! These events are free for South Auckland schools.

SYMPHONIC JOURNEY - WORKSHOP FREE

LA FORZA DEL DESTINO
FREE PLAYTHROUGH SUNDAY 19 OCTOBER 5.00 PM
DUE DROP EVENTS CENTRE

VERDI OVERTURE
LA FORZA DEL DESTINO
ELGAR CELLO CONCERTO IN E MINOR
JENNY MCLEOD ADAGIO - ALLEGRO
JOURNEY THROUGH
MOUNTAIN PARKLANDS

TOM CHESTER CONDUCTOR
SAMANTHA BERRINGTON CELLO



TOM CHESTER



The MSO's annual Symphonic Journey weekend workshop, a beloved event for young musicians and community players from South Auckland, will take place this year at the Due Drop Events Centre. Participants will include musicians from the Howick School of Music, the Tironui Trust, and all who share a love for orchestral playing. We're delighted to welcome back conductor Tom Chester, who will lead this year's romantic program.

A FREE informal playthrough Sunday at 5pm for friends, family and public at the BNZ Theatre. Players interested in participating in this FREE workshop weekend Saturday 18 and Sunday 19 October, should contact the MSO at admin@manukausymphony.org.nz



MANUKAU SYMPHONY ORCHESTRA



For over 30 years, the Manukau Symphony Orchestra has been a cultural cornerstone in South Auckland, dedicated to enriching the community through exceptional orchestral performances and impactful educational outreach.

Uniquely blending professional mentorship with community engagement, the MSO's Tuakana Mentorship Programme offers musicians a distinctive, non-auditioned environment that champions musical excellence. The MSO challenges and inspires its players with dynamic repertoire, while hosting internationally acclaimed soloists, composers, and conductors in South Auckland.

Operated by the charitable Manukau Orchestral Society Inc., the MSO is a part-time, volunteer-driven orchestra led by professionals. It fosters a welcoming and inclusive space for musicians of all ages and backgrounds, providing opportunities to learn, perform, and connect within a vibrant community.

The MSO's membership is composed of approximately 33% professional Tuakana Mentors, 33% community musicians, and 33% youth players. While most members come from South Auckland, we warmly welcome those from outside the region who share our passion and commitment to orchestral music.

MSO TUAKANA MENTORSHIP PROGRAMME

The MSO is proud of its Mentorship Programme, established in 1993, which offers youth and community players the chance to perform alongside a professional mentor. Known as the MSO Tuakana Mentorship Programme, this initiative draws from the concept of tuakana-teina (meaning: older sibling, younger sibling), a learning approach from Te Ao Māori. Originally used on the Marae, tuakana-teina now describes equal and reciprocal learning relationships in adult education, where each participant brings unique strengths to create a shared learning experience. This program enables all MSO players, regardless of age or background, to grow, refine



their technique, and deepen their musical expression through mutual engagement and perspective-sharing.



MSO SCHOLARSHIP PROGRAMME

Running in parallel with the mentorship programme, the MSO Youth Scholarship Programme supports young musicians by providing scholarships for tuition assistance, instrument loans, and at least two guaranteed places in our subscription series concerts. In 2025, we're excited to offer these scholarships to talented young players.

Our heartfelt thanks go to our sponsors, Phil and Helen Greenbank, Jean and Robin Bennett, Ann Morris and The Stringed Instrument Company, for their generous support of this programme. Scholarships will be presented on stage at the From the New World concert at the end of the year.



SUPPORT YOUR LOCAL ORCHESTRA

THERE ARE MANY WAYS YOU CAN HELP US

By sponsoring, making a bequest or volunteering your time and expertise, you can help secure the future and sustainability of your local orchestra. Please visit our website www.manukausymphony.org.nz or contact us for more information on how your contribution can make a difference.

- **Make a donation online or at our concerts**

Support us with an online or in-concert donation—donations are tax-deductible in New Zealand. Visit <https://manukausymphony.org.nz/support-us/donate/> or email us at admin@manukausymphony.org.nz to make a donation and receive a receipt. Have your name mentioned in our Benefactor Pages: **Vivaldi Circle** to \$1,000, **Beethoven Circle** to \$5,000, **Mozart Circle** to \$10,000, **Haydn Circle** \$10,000+

- **Become a Chair Sponsor**

What's your favourite orchestral instrument? By becoming a Chair Sponsor, you can deepen your connection with the MSO, meet your sponsored Chair Player, and enjoy invitations to exclusive events throughout the year.

- **Support Our Youth**

Help us foster the next generation of musicians. The MSO offers annual scholarships to support our youth players with tuition fees and valuable opportunities to perform with the orchestra.

Thank you for considering these meaningful ways to support the MSO!

Find out more at www.manukausymphony.org.nz



SCAN AND DONATE

SUPPORT THE MSO
SO WE CAN CONTINUE PLAYING
THE MUSIC THAT YOU LOVE

HOW TO SUBSCRIBE

Book tickets anytime online with Eventfinda at www.eventfinda.co.nz and search 'Manukau Symphony'.

SUBSCRIBE before 1 February 2025 to receive your tickets and prepaid parking for the year. Save on your ticket costs and we will endeavor to book your favourite seats for each concert.

EMAIL Scan and email your subscription form to admin@manukausymphony.org.nz

POST Send your booking form with credit card details to:
Manukau Symphony Orchestra, PO Box 38-233, Howick, Auckland 2145.

PHONE MSO office: (09) 577 3031

The MSO Office will be closed from 20 Dec 2024 – 13 January 2025

BOOK IN PERSON

Visit Eventfinda ticket box offices: Te Oro Arts Center Glen Innes, Hawkins Theatre Papakura.

DOOR SALES

BNZ Theatre Box office opens two hours prior to performance.

PHONE SALES

Eventfinda: 0800 BUY TIX (289 849) or MSO: (09) 577 3031.

Booking fees may apply.

PARKING

Due Drop Events Center uses parking app Inugo. For more information visit <https://www.pacific.org.nz/parking>. Rates are \$4.00 for the first hour, then 50 cents for subsequent hours. You may also pay for your parking at the Box Office on the day for \$5.00 This is contactless payment (Card only).

Parking at TeTuhi is free at the rear of the building off William Roberts Road.

Manukau Symphony Orchestra reserves the right to alter any advertised schedule of artists and programmes.

SUBSCRIBE TODAY

SUBSCRIBE DIRECTLY WITH THE MSO FOR 2025 AND RECEIVE:

- 10% discount on ticket prices, including extra tickets brought throughout the year through the MSO office
- No credit card or booking fee
- Reserve your favourite seats for the entire year
- Contact the MSO anytime during the week with your ticket enquiries.

Reserve Area	Subscriber Discount	Standard Price per Concert
Premium Adult	\$63.00	\$70.00
Premium Senior	\$58.50	\$65.00
Reserve A Adult	\$49.50	\$55.00
Reserve A Senior	\$45.00	\$50.00
Reserve B Adult	\$40.50	\$45.00
Reserve B Senior	\$36.00	\$40.00
Student	\$15.00	\$15.00
Parking	\$ 5.00	\$ 5.00

GENERAL ADMISSION CONCERT PRICING

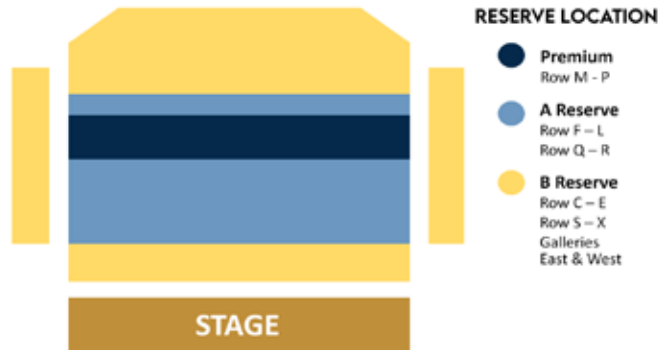
Ticket Type	MSO Family Concert (DDEC)
Adult	\$38.00
Senior	\$32.00
Student/Child	\$ 5.00
Family Price (2A,2C)	\$65.00
Parking	Free

Nicholas Tarling Aria Competition Final Round
Symphonic Journey Workshop – Informal Concert

Free Entry. No tickets required.
Free Entry. No tickets required.

SEATING PLAN

BNZ THEATRE SEATING PLAN



SUBSCRIPTION FORM

SELECT YOUR CONCERTS, TICKETS AND PARKING
SUPPORT THE MSO WITH YOUR DONATION
PLEASE REFER TO TICKET PRICES PAGE 18



I WOULD LIKE TO RECEIVE MY TICKETS BY EMAIL

Print your tickets anytime at home or scan from your phone at the door.

TITLE	RESERVE AREA			NO. OF TICKETS			SUBTOTAL	PARKING \$5	TOTAL
	PREM	A	B	ADULT	SENIOR	STUD			
THE RESOLUTE									\$
FAMILY CONCERT	GENERAL ADMISSION								\$
PASTORALE									\$
FROM THE NEW WORLD									\$
TOTAL (TICKETS & PARKING)									\$
DONATION NAME YOUR DONATION FUND (SEE PAGE 16)									\$
GRAND TOTAL									\$



SUBSCRIBER INFORMATION

First Name _____

Last Name _____

Address _____

Suburb _____

City _____ Postcode _____

Phone _____

Mobile _____

Email _____

PAYMENT

VISA Mastercard

Card No.

_____/_____/_____/_____

Expiry Date ____/____

Name on Card _____

Signature _____

I would like to receive information about bus trips from Howick or Pakuranga for the concerts at the Due Drop Events Centre

I would like to receive the newsletter by email – the MSO's preferred method of communication – instantaneous and environmentally friendly

OR

I would like to receive the newsletter by post

Bravo!

THANK YOU TO OUR SPONSORS



CHENGETA TRUST



BENEFACTORS

HAYDN CIRCLE

SIR NOEL (KNZM) AND LADY ROBINSON

MOZART CIRCLE

DR TOM AND MRS ANN MORRIS
JEAN AND ROBIN BENNETT

BEETHOVEN CIRCLE

PHIL & HELEN GREENBANK
RAEWYN & PETER STONE
GERDA MCGECHAN
DANIEL NATHAN

VIVALDI CIRCLE

Stringed Instrument Company, Anne Brady, Robert Beresford, Kerry Bromell, Chris Cameron, Trevor Coe, Patsy Culpán, Anne Esterman, Diane Field, Frank & Janet Gardner, Roger Goldstone, Uwe Grodd, Godfrey Hansen, Barbara & Gary Hieatt, Peter Henry, John Jensen, Robert Liu, Yolande McLeod, Shelley Robertson, Patricia Roderick, Mike Steer, Catherine Stevens, Sarah Thompson, Charlotte van Asch, Edelgard Wai, Diana Young



Save the Dates!

NICHOLAS TARLING ARIA COMPETITION

Tues 11 Feb 7.00pm
Due Drop Events Centre

THE RESOLUTE

Sat 15 Mar 7.30pm
Due Drop Events Centre

MSO SCHOOL CONCERTS

Mon 31 Mar, Tues 1 Apr
Due Drop Events Centre

MSO FAMILY CONCERT

Sun 15 Jun 5.00pm
Due Drop Events Centre

OPERA GALA

Sun 20 Jul 5.00pm
Auckland Town Hall

PASTORALE

Sun 24 Aug 5.00pm
Due Drop Events Centre

SYMPHONIC JOURNEY

Sun 19 Oct 5.00pm
Due Drop Events Centre

FROM THE NEW WORLD

Sat 15 Nov 7.30pm
Due Drop Events Centre

MSO 20 25



- 🌐 manukausymphony.org.nz
- 📘 [manukausymphonyorchestra](https://www.facebook.com/manukausymphonyorchestra)
- 📷 [manukau_symphony_orchestra](https://www.instagram.com/manukau_symphony_orchestra)

MANUKAU SYMPHONY
orchestra
...a very special spirit